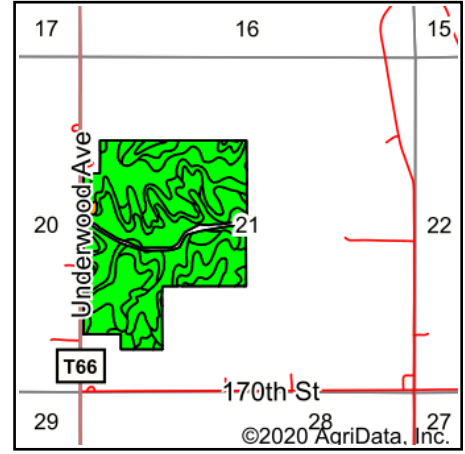
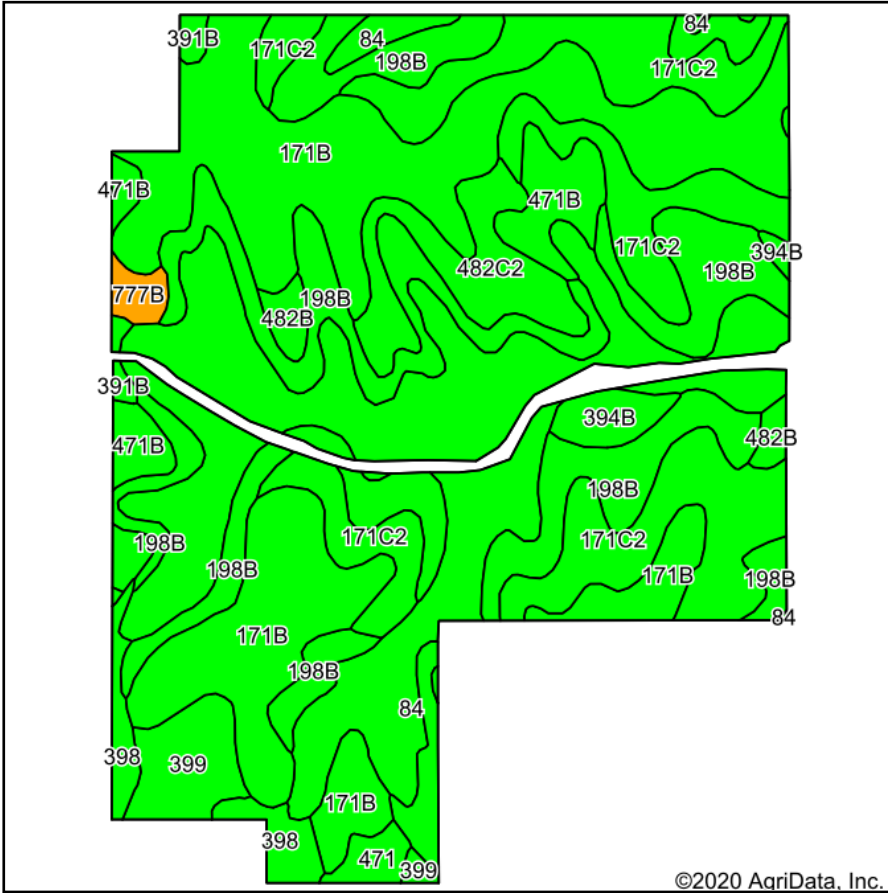


Tillable Soils Map



State: **Iowa**
 County: **Floyd**
 Location: **21-96N-15W**
 Township: **Niles**
 Acres: **156.7**
 Date: **11/14/2020**



Maps Provided By:



Soils data provided by USDA and NRCS.

©2020 AgriData, Inc.

© AgriData, Inc. 2020

www.AgriDataInc.com

Area Symbol: IA067, Soil Area Version: 26										
Code	Soil Description	Acres	Percent of field	CSR2 Legend	Non-Irr Class *c	*i Corn	*i Soybeans	CSR2**	CS R	*n NCCPI Overall
171B	Bassett loam, 2 to 5 percent slopes	39.40	25.1%		lle	212.8	61.7	85	79	88
84	Clyde silty clay loam, 0 to 3 percent slopes	33.69	21.5%		llw	224	65	88	77	90
198B	Floyd loam, 1 to 4 percent slopes	32.51	20.7%		llw	222.4	64.5	89	74	85
171C2	Bassett loam, 5 to 9 percent slopes, eroded	25.83	16.5%		llle	192	55.7	77	62	81
482C2	Racine loam, 5 to 9 percent slopes, moderately eroded	6.34	4.0%		llle	192	55.7	78	62	89
471B	Oran loam, 2 to 5 percent slopes	5.60	3.6%		lw	209.6	60.8	74	79	82
399	Readlyn silt loam, 1 to 3 percent slopes	3.97	2.5%		lw	220.8	64	91	89	80
398	Tripoli clay loam, 0 to 2 percent slopes	2.84	1.8%		llw	224	65	82	79	68
394B	Ostrander loam, 2 to 5 percent slopes	2.04	1.3%		lle	225.6	65.4	88	84	78
482B	Racine loam, 2 to 5 percent slopes	1.51	1.0%		lle	212.8	61.7	76	79	68
471	Oran loam, 0 to 2 percent slopes	1.15	0.7%		lw	217.6	63.1	79	84	83
777B	Wapsie loam, 2 to 5 percent slopes	0.99	0.6%		lle	80	23.2	48	53	66
391B	Clyde-Floyd complex, 1 to 4 percent slopes	0.83	0.5%		llw	216	62.6	87	73	88
Weighted Average						212.6	61.7	84.3	74.2	*n 85.4

**IA has updated the CSR values for each county to CSR2.

*i Yield data provided by the ISPAID Database version 8.1.1 developed by IA State University.

*n: The aggregation method is "Weighted Average using all components"

*c: Using Capabilities Class Dominant Condition Aggregation Method

Soils data provided by USDA and NRCS.