



United States Department of Agriculture

Natural Resources Conservation Service
507 17th St. SE
Independence, Ia 50644

CERTIFIED MAIL--RETURN RECEIPT REQUESTED

December 4, 2014

Summit Ag Fund II LLP
10640 County Highway D20
Alden, Ia. 50006

Dear Summit Ag Fund II LLP:

Based upon your recent request for a Certified Wetland Determination, this letter is to notify you that a preliminary wetland determination has been completed for your Farm #6611, Tract #23922, Buchanan County, Iowa. This determination was completed in accordance with the National Food Security Act Manual Wetland Identification procedures; title 7 Part 12 of the Code of Federal Regulations and title 7 part 12.5(b) of the Code of Federal Regulations. See the enclosed NRCS-CPA-026 "*Highly Erodible Land and Wetland Conservation Determination*" form for definitions and aerial photo for locations.

The **Preliminary Technical Determination** is: There are wetland(s) or wetland(s) types as listed on the attached form. If you did not request a wetland determination for your entire farm, wetlands may exist in other locations.

The area(s) designated as wetlands are wetlands because:

- Has a predominance of hydric soils,
- Is inundated or saturated by surface or groundwater at a frequency and duration sufficient to support a prevalence of hydrophytic vegetation typically adapted for life in saturated soil conditions, and
- Under normal circumstances does support a prevalence of such vegetation.

For those sites that are labeled as Farmed Wetland (FW) or Farmed Wetland Pasture (FWP): manipulation has occurred prior to December 23, 1985. See the wetland definitions on the NRCS-CPA-026.

This preliminary determination will become final 30 days after receipt of this letter unless you request one of the following options in writing:

- 1) A reconsideration and field visit. During the field visit we will review the basis for our determination, answer any questions you have regarding this preliminary determination, and offer an opportunity for you to provide additional information regarding this determination.
- 2) Request mediation by contacting the Iowa Mediation Service at the address below. Mediation may be used in an attempt to settle your concerns with the preliminary wetland determination.

Iowa Mediation Service
1441 29th Street, Suite 120
West Des Moines, IA 50266

Helping People Help the Land

An Equal Opportunity Provider, Employer and Lender

If you choose to use mediation, the Natural Resources Conservation Service (NRCS) will pay up to one-half of the costs that are appropriate and reasonable which are associated with securing the services of a trained mediator when the services are provided on other than a voluntary basis. The NRCS will have final discretion over what is considered appropriate and reasonable.

- 3) You may waive your rights to mediation and a field review of the preliminary technical determination. This request must be in writing and addressed to Jay T. Mar, State Conservationist, 210 Walnut Street, Room 693, Des Moines, IA 50309. In this case you will immediately be issued a final technical determination and appeal rights to National Appeals Division (NAD) and/or to the FSA County Committee.

After completion of the field visit if one is requested, or following the completion of mediation, a final technical determination will be issued. If you choose to take no action, the Preliminary Technical Determination will become the **Final Technical Determination** 30 days after receiving this notice. Once this determination becomes **Final**, you may appeal to the FSA County Committee, or to the National Appeals Division (NAD), at the addresses listed below within **60** calendar days from the date of receipt of this notice.

Buchanan County FSA County Committee
507 17th St. SE
Independence, Ia 50644
319-334-2543

or

National Appeals Division
Post Office Box 68806
Indianapolis, IN 46268-0806

In order to maintain your eligibility for USDA program benefits, contact your local NRCS office prior to performing any land altering activities (tiling, land clearing, ditching, drainage maintenance, filling, leveling, removal of woody vegetation, or dredging,) in or adjacent to the identified Wetland (W), Farmed Wetland (FW), Farmed Wetland Pasture or Hayland (FWP), or Not Inventoried area(s).

This certified wetland determination/delineation has been conducted for the purpose of implementing the Food Security Act of 1985 as amended. This determination/delineation may not be valid for identifying the extent of the United States Army Corps of Engineers (COE) Clean Water Act jurisdiction for this site. If you intend to conduct any activity that constitutes a discharge of dredged or fill material into wetlands or other waters of the United States including lakes, rivers, intermittent or perennial streams, you should request a jurisdictional determination from the Rock Island District COE office prior to starting your work.

United States Department of Agriculture



Natural Resources Conservation Service
507 17th St. SE
Independence, Ia 50644

If you have any questions about this procedure or determination, please contact me at 563-422-6201 (office) or 563-379-3892 (cell). Also, if anyone else is associated with this farm; tenant, landlord, partner, I encourage you to discuss this determination with them.

Sincerely,

A handwritten signature in blue ink, which appears to read "Robert J. Vobora". The signature is fluid and cursive.

Robert J. Vobora
Area Resource Soil Scientist

Enclosures

Cc: Christopher Soules, 4407 30th St., Lamont, Ia. 50650
Roger Erickson, District Conservationist, Buchanan County NRCS
Buchanan County FSA



HIGHLY ERODIBLE LAND AND WETLAND CONSERVATION DETERMINATION

Name Address:	Summit Ag Fund II LLP 10640 County Highway D20 Alden, Ia. 50006	Request Date:	11/26/2013	County:	Buchanan
Agency or Person Requesting Determination:	FSA	Tract No:	23922	FSA Farm No.:	6611

Section I - Highly Erodible Land

Is a soil survey now available for making a highly erodible land determination?	
Are there highly erodible soil map units on this farm?	

Fields in this section have undergone a determination of whether they are highly erodible land (HEL) or not; fields for which an HEL Determination has not been completed are not listed. In order to be eligible for USDA benefits, a person must be using an approved conservation system on all HEL.

<u>Field(s)</u>	<u>HEL(Y/N)</u>	<u>Sodbust(Y/N)</u>	<u>Acres</u>	<u>Determination Date</u>

The Highly Erodible Land determination was completed in the

Section II - Wetlands

Are there hydric soils on this farm?	Y
--------------------------------------	---

Fields in this section have had wetland determinations completed. See the Definition of Wetland Label Codes for additional information regarding allowable activities under the wetland conservation provisions of the Food Security Act and/or when wetland determinations are necessary to determine USDA program eligibility.

<u>Field(s)</u>	<u>Wetland Label*</u>	<u>Occurrence Year (CW)**</u>	<u>Acres</u>	<u>Determination Date</u>	<u>Certification Date</u>
1	PC		2.0	12/3/2014	1/3/2015
2	PC		70.9	12/3/2014	1/3/2015
13	NW		0.2	12/3/2014	1/3/2015
13	W		5.1	12/3/2014	1/3/2015
14	NW		0.5	12/3/2014	1/3/2015
15	W		0.4	12/3/2014	1/3/2015

The wetland determination was completed in the field. It was mailed to the person on 12/3/2014.

Remarks: Threatened or Endangered species or their habitat may occur within the area of this determination. Section 7 Consultation (Federal Agency) or Section 10 Consultation (Private Individuals) with the US Fish and Wildlife Service (USFWS) and/or consultation with the Iowa Department of Natural Resources (IDNR) may be required. Proof of completed consultation with the USFWS and/or the IDNR must be submitted to NRCS prior to NRCS providing Technical (TA) or Financial (FA) assistance on projects, or portions thereof, that may affect threatened or endangered species or their habitats.

I certify that the above determinations are correct and were conducted in accordance with policies and procedures contained in the National Food Security Act Manual.

Signature Designated Conservationist	Date
	12/3/2014

The U.S. Department of Agriculture (USDA) prohibits discrimination in all its programs and activities on the basis of race, color, national origin, gender, religion, age, disability, political beliefs, sexual orientation, and marital or family status. (Not all prohibited bases apply to all programs.) Persons with disabilities who require alternative means for communication of program information (Braille, large print, audiotape, etc.) should contact USDA's TARGET Center at 202-720-2600 (voice and TDD).

To file a complaint of discrimination, write USDA, Director, Office of Civil Rights, Room 326W, Whitten Building, 14th and Independence Avenue, SW, Washington, DC 20250-9410 or call (202) 720-5964 (voice or TDD). USDA is an equal opportunity provider and employer.

*DEFINITIONS OF WETLAND LABELS

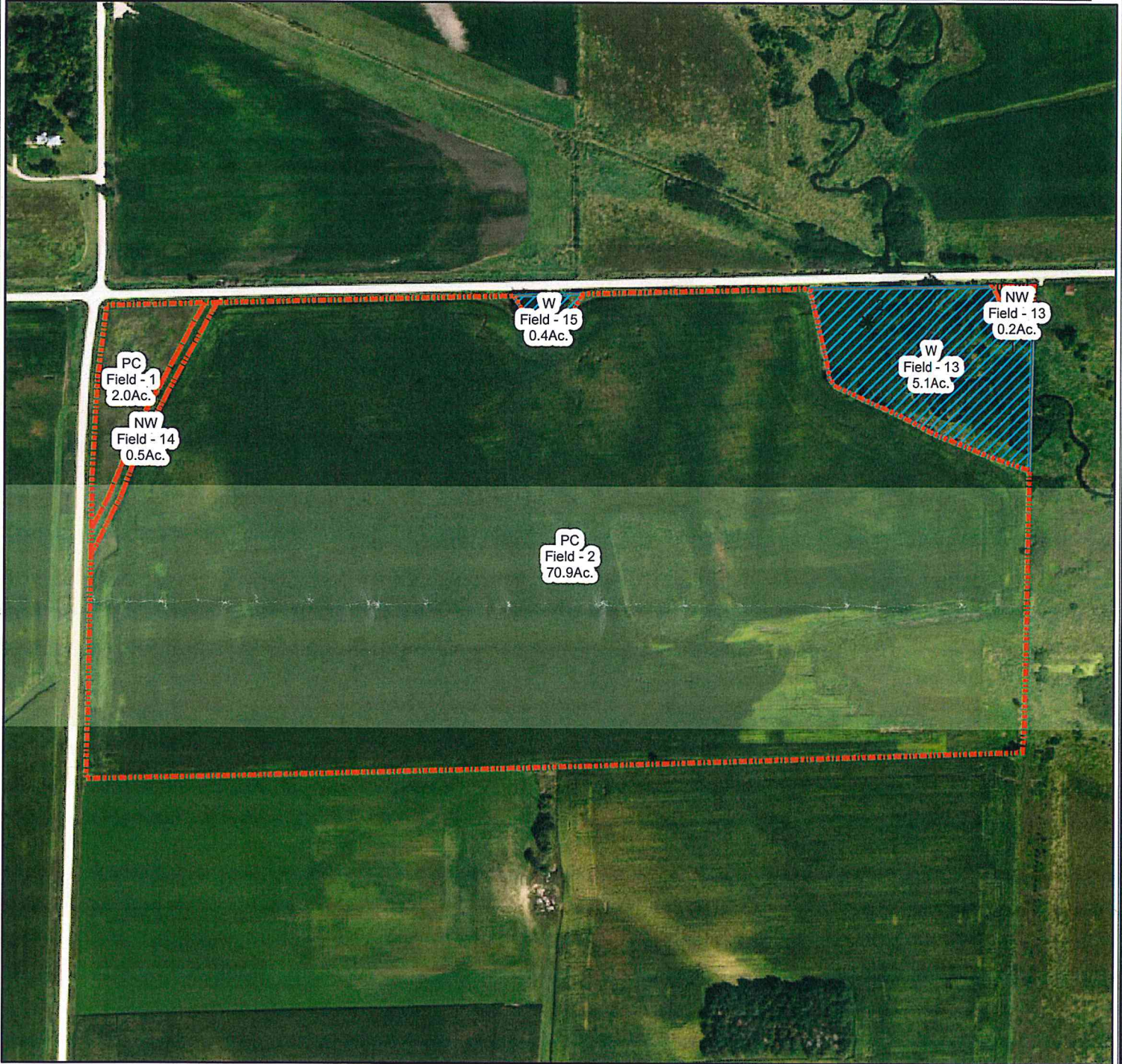
AW	<u>Artificial Wetland</u> : An area that was formerly a non-wetland area under natural conditions but now exhibits wetland characteristics because of the influence of human activities. These areas are exempt from the Food Security Act of 1985, as amended. This label includes irrigation induced wetlands.
CC	<u>Commenced Conversion</u> : A wetland, farmed wetland, farmed wetland pasture, or converted wetland on which the conversion began but was not completed before December 23, 1985, was approved by FSA to continue, and the conversion was completed by January 1, 1995.
CPD	<u>COE Permit with Mitigation</u> : A converted wetland authorized by a permit issued under Section 404 of the Clean Water Act. Production of agricultural commodities is allowed subject to conditions of the permit.
CMW	<u>Categorical Minimal Effect</u> : A wetland that meets specific categories of conversion activities that have been determined by NRCS to have minimal effect, individually and cumulatively, on the functions and values of the wetland and the wetlands in the watershed.
CW	<u>Converted Wetland</u> : A wetland converted between December 23, 1985, and November 28, 1990. Production of an agricultural commodity or additional manipulation of these areas will yield UDSA benefit ineligibility. Also, these areas are wetlands converted after December 23, 1985, by a county, drainage district, or similar entity. For these instances, production of an agricultural commodity or forage for mechanical harvest or additional manipulation will cause ineligibility for USDA program benefits.
CW+year	<u>Converted Wetland + (year the conversion occurred)</u> : A wetland converted after November 28, 1990, where the USDA program participant is ineligible for benefits until the wetland is restored or mitigated unless an exemption applies.
CWNA	<u>Converted Wetland Non-Agricultural Use</u> : A wetland converted after November 28, 1990, to a use other than agricultural commodity production. Label not used for certified wetland determinations completed after 2/2008.
CWTE	<u>Converted Wetland Technical Error</u> : A wetland converted or commenced after December 23, 1985, based on an incorrect NRCS determination. This label does not apply to obvious wetlands as defined in the National Food Security Act Manual.
FW	<u>Farmed Wetland</u> : A wetland that was manipulated and planted before December 23, 1985, but still meets inundation or saturation criteria. These areas may be farmed and maintained as documented before December 23, 1985, as long as they are not abandoned (i.e., management or maintenance for commodity production ceased for 5 consecutive years).
FWP	<u>Farmed Wetland Pasture or Hayland</u> : A wetland that is used for pasture or haying, was manipulated and planted before December 23, 1985, but still meets the inundation or saturation criteria. These areas may be farmed and maintained as documented before December 23, 1985, as long as they are not abandoned (i.e., management or maintenance for commodity production ceased for 5 consecutive years).
MIW	<u>Mitigation Exemption</u> : A converted wetland, farmed wetland or farmed wetland pasture of which the acreage, functions and values lost have been compensated for through an NRCS-approved mitigation plan.
MW	<u>Minimal Effect Exemption</u> : A converted wetland that is exempt from the wetland conservation provisions of the Food Security Act of 1985, as amended, based on an NRCS determination that the conversion has or will have a minimal effect, individually and cumulatively, on the functions and values of the wetland and the wetlands in the watershed.
MWM	<u>Mitigation Site</u> : The site of wetland restoration, enhancement, or creation serving as mitigation for the mitigation exemption (MIW) site.
NI	<u>Not Inventoried</u> : An area where no wetland determination has been conducted. Label not used for certified wetland determinations completed after 2/2008.
NW	<u>Non-Wetland</u> : An area that does not contain a wetland. Also includes wetlands converted before December 23, 1985, but a commodity crop was not produced and the area does not meet wetland criteria (not been abandoned).
PC	<u>Prior-Converted Cropland</u> : A wetland converted to cropland before December 23, 1985, and as of December 23, 1985, was capable of being cropped and did not meet farmed wetland hydrology criteria. These areas are not subject to the wetland conservation provisions of the Food Security Act of 1985, as amended, unless further drainage manipulation affects adjacent wetlands.
PC/NW	<u>Prior Converted Cropland/Non-Wetland</u> : An area that contains both PC and NW.
TP	<u>Third-Party Exemption</u> : A wetland converted after December 23, 1985, by a third party who is not associated with the participant, and the conversion is not a result of a scheme or device. A third party does not include predecessors in interest on the tract, drainage districts, or other local government entities.
W	<u>Wetland</u> : An area meeting wetland criteria that was not converted after December 23, 1985. These areas include farmed wetlands and farmed wetland pasture that have been abandoned.
WX	<u>Manipulated Wetlands</u> : A wetland manipulated after December 23, 1985, but the manipulation was not for the purpose of making production possible and production was not made possible. These areas include wetlands manipulated by drainage maintenance agreements.

The U.S. Department of Agriculture (USDA) prohibits discrimination in all its programs and activities on the basis of race, color, national origin, gender, religion, age, disability, political beliefs, sexual orientation, and marital or family status. (Not all prohibited bases apply to all programs.) Persons with disabilities who require alternative means for communication of program information (Braille, large print, audiotape, etc.) should contact USDA's TARGET Center at 202-720-2600 (voice and TDD). To file a complaint of discrimination, write USDA, Assistant Secretary for Civil Rights, 1400 Independence Avenue, S.W., Stop 9410, Washington, DC 20250-9410, or call toll-free at (866) 632-9992 (English) or (800) 877-8339 (TDD) or (866) 377-8642 (English Federal-relay) or (800) 845-6136 (Spanish Federal-relay). USDA is an equal opportunity provider and employer.

Certified Wetland Determination Map

Land Owner: Summit Ag Fund II LLP
Tract & Farm # T23922 F6611
Legal Description: T. 90 N., R. 7 W., sec.5
Certification Office: West Union AO

Certified By: Robert J. Vobora ARSS
Map Creation Date: 12/3/2014
Determination County: Buchanan, IA



Legend

- 1:4,800
- 0 200 400 800 1,200 Feet
- Certified Wetland Determination Boundary
 - Wetlands
 - Surface Drain
 - Berm/Dike
 - Subsurface Drain
 - Boundary Point
 - Data Form Point
 - Picture Point
- | Wetland Codes | | | |
|---------------|----------------------|-----|--------------------------|
| W | Wetland | FWP | Farmed Wetland Pasture |
| CW | Converted Wetland | MIW | Mitigation Exemption |
| CW+yr | Converted After 1990 | NW | Non Wetland |
| FW | Farmed Wetland | PC | Prior Converted Cropland |
| AW | Artificial Wetland | | |



This Determination is valid for the area within the Dashed Red Line(Determination Boundary)