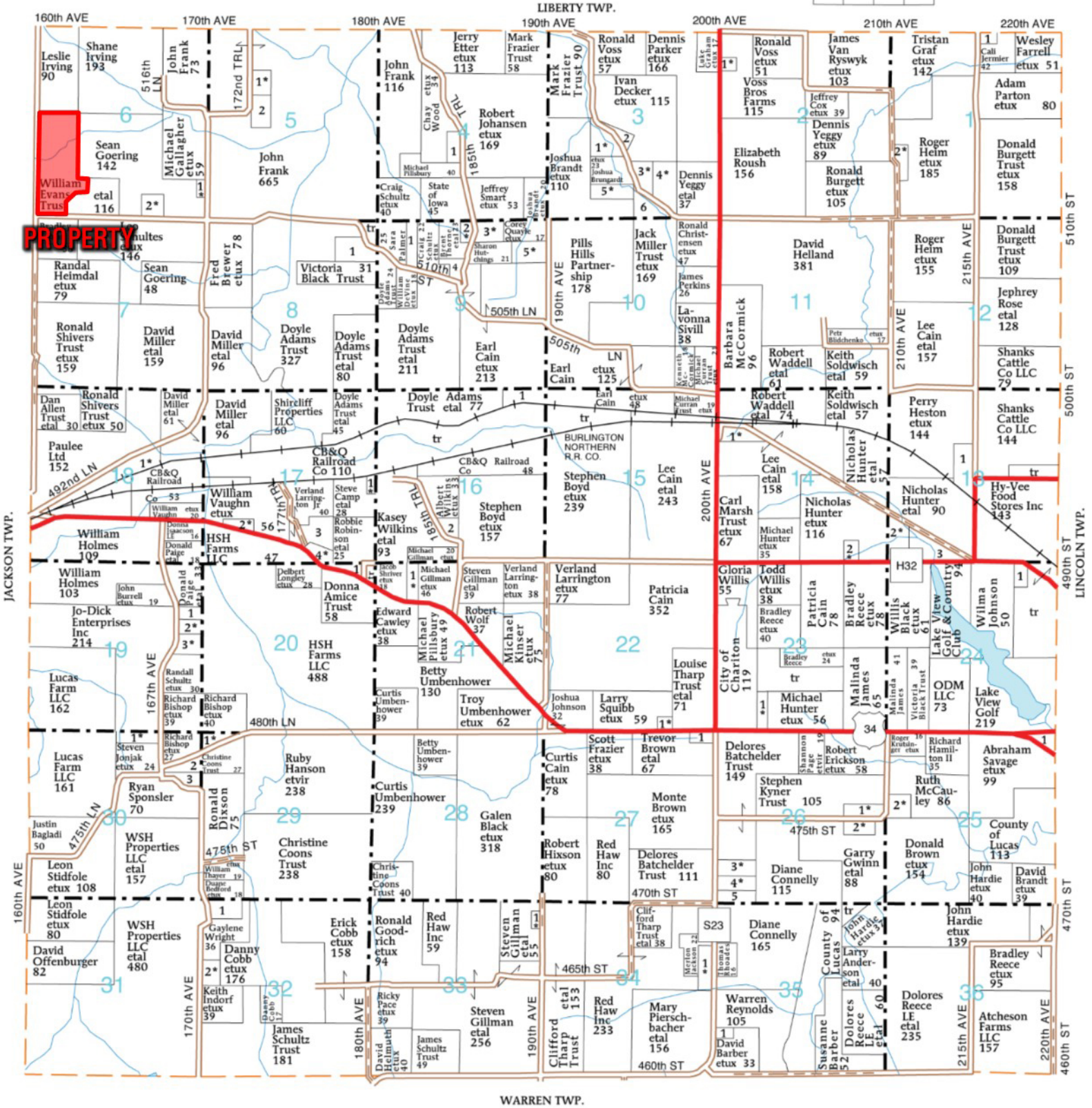
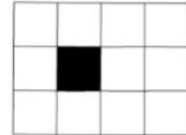


T-72-N

WHITE BREAST PLAT

(Landowners)

R-22-W



PROPERTY

WARREN TWP.

JACKSON TWP.

LINCOLN TWP.

160th AVE
170th AVE
180th AVE
190th AVE
200th AVE
210th AVE
220th AVE

510th ST
500th ST
490th ST
480th ST
470th ST
460th ST

LIBERTY TWP.

WARREN TWP.

Map showing landowners and their acreage. Owners include: Leslie Irving (90), Shane Irving (193), John Frank (73), Michael Gallagher (59), Sean Goering (142), John Frank (665), John Frank (116), Jerry Etter (113), Mark Frazier (58), Ronald Voss (57), Dennis Parker (166), Ivan Decker (115), Voss Bros Farms (115), James Van Ryswyk (103), Tristan Graf (142), Wesley Farrell (51), Adam Parton (80), Donald Burgett (158), Robert Johansen (169), Joshua Brandt (110), Elizabeth Roush (156), Dennis Veggy (37), Ronald Burgett (105), Roger Heim (185), Donald Burgett (109), Jephrey Rose (128), Sean Goering (48), Fred Brewer (78), Victoria Black Trust (31), Craig Schultz (40), Jeffrey Smart (53), Jack Miller (169), Ronald Christensen (47), David Holland (381), Roger Heim (155), Donald Burgett (109), Randal Helmdal (79), David Miller (159), David Miller (96), Doyle Adams Trust (327), Doyle Adams Trust (80), Earl Cain (213), Jack Miller (169), LaVonna Sivill (38), Robert Waddell (61), Keith Soldwisch (59), Lee Cain (157), Shanks Cattle Co LLC (79), Shanks Cattle Co LLC (144), Dan Allen (30), Ronald Shivers (50), David Miller (61), David Miller (96), Shireliff Properties LLC (60), Doyle Adams Trust (45), Doyle Adams Trust (77), Stephen Boyd (157), Stephen Boyd (239), Lee Cain (243), Nicholas Hunter (116), Nicholas Hunter (90), Hy-Vee Food Stores Inc (143), Paulee Ltd (152), CB&Q Railroad (110), Stephen Boyd (239), Lee Cain (243), Carl Marsh (67), Nicholas Hunter (116), Nicholas Hunter (90), William Holmes (109), William Holmes (103), Jo-Dick Enterprises Inc (214), William Vaughn (56), HSH Farms LLC (488), Donna Amice Trust (58), Edward Cawley (38), Robert Wolf (37), Michael Pillsbury (49), Michael Kinser (35), Verland Larrington (38), Patricia Cain (352), Louise Tharp (71), Gloria Willis (55), Todd Willis (38), Patricia Cain (78), Bradley Reece (40), Bradley Reece (24), Michael Hunter (56), Malinda James (65), Malinda James (41), Victoria Black Trust (61), ODM LLC (73), Lake View Golf & Country Club (94), Wilma Johnson (50), Lake View Golf (219), Lucas Farm LLC (162), Richard Bishop (39), Richard Bishop (40), Curtis Umbohner (39), Betty Umbohner (39), Curtis Umbohner (239), Galen Black (318), Robert Hixson (80), Red Haw Inc (80), Delores Batchelder (111), Diane Connelly (115), Garry Gwinn (88), John Hardie (40), David Brandt (39), Lucas Farm LLC (161), Ryan Sponsler (70), Ronald Dixon (75), Christine Coons Trust (238), Christine Coons Trust (40), Curtis Umbohner (239), Galen Black (318), Robert Hixson (80), Red Haw Inc (80), Delores Batchelder (111), Diane Connelly (115), Garry Gwinn (88), John Hardie (40), David Brandt (39), Justin Bagladi (50), WSH Properties LLC (157), WSH Properties LLC (480), Gaylene Wright (36), Danny Cobb (176), Keith Indorf (39), Erick Cobb (158), Ronald Goodrich (94), Red Haw Inc (59), Steven Gillman (53), Clifford Tharp (153), Red Haw Inc (233), Mary Piersbacher (156), Warren Reynolds (105), David Barber (33), Leon Stidfole (108), Leon Stidfole (80), David Offenburger (82), WSH Properties LLC (480), Keith Indorf (39), Erick Cobb (158), Ronald Goodrich (94), Red Haw Inc (59), Steven Gillman (53), Clifford Tharp (153), Red Haw Inc (233), Mary Piersbacher (156), Warren Reynolds (105), David Barber (33), Susanne Barber (54), Dolores Reece (40), Dolores Reece (25), John Hardie (139), Bradley Reece (95), Atcheson Farms LLC (157), Abraham Savage (99), Ruth McCaulley (86), Donald Brown (154), John Hardie (40), David Brandt (39), John Hardie (139), Bradley Reece (95), Atcheson Farms LLC (157), Delores Reece (25), John Hardie (139), Bradley Reece (95), Atcheson Farms LLC (157).