

BURT COUNTY

299.25 ACRES M/L OF NEBRASKA FARMLAND AVAILABLE



ANDREW ZELLMER
712.898.5913
Andrewz@PeoplesCompany.com

BRYAN BERGDALE
712.251.8588
Bryan@PeoplesCompany.com

180.75 ACRES M/L

LISTING #14721

COUNTY ROAD RS LYONS, NE 68038

DESCRIPTION

Peoples Company is proud to present high quality Burt County farmland! This farm consists of 180.75 acres m/l with 169.91 FSA cropland acres carrying a NCCPI rating of 69.6. This farm primarily consists of Zook and Colo silty clay loam soils. Improvements include an irrigation pivot which provides irrigation for approximately 120 acres. Farm is located just northwest of Lyons, Nebraska on County Road Rs, in Section 26 of Everett Township in Burt County.

DIRECTIONS

From the intersection of North 5th Street and North Main Street in Lyons, head west on North Main Street (which will become County Road Rs) for one mile. The farm is situated on the north side of County Road RS.

IMPROVEMENTS

Pivot Information:
 Make: T-L
 Model: 765
 Year: 2004
 Number of Towers: 7
 GPM: 850
 Serial Number: 21916



PRICE: \$1,084,500
PRICE PER ACRE: \$6,000

TILLABLE SOILS MAP

Code	Soil Description	Acres	Percent of Field	Non-Irr Class Legend	Non-Irr Class *c	Irr Class *c	*n NCCPI Overall
7099	Zook silty clay loam	133.45	78.5%	Green	IIw	IIw	68
7891	Zook silty loam	35.08	20.6%	Green	IIw	IIw	75
7770	Colo silty clay loam	1.38	0.8%	Green	IIw	IIw	88

Weighted Average *n 69.6

FOR MORE INFORMATION VISIT PEOPLESCOMPANY.COM

118.50 ACRES M/L

LISTING #14722

COUNTY ROAD P TEKAMAH, NE 68061

DESCRIPTION

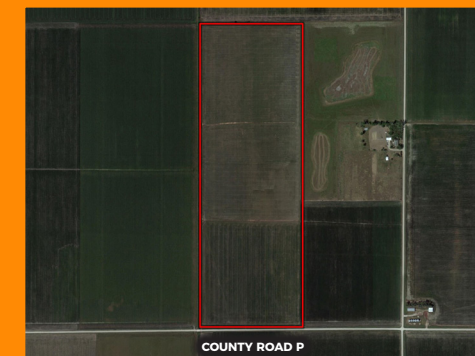
This farm consists of 118.5 acres m/l with 118 tillable acres carrying a NCCPI rating of 50.8. This farm primarily consists of Luton and Owego silty clay loam. Improvements include an irrigation pivot which provides irrigation for approximately 60 acres m/l. The farm is located just north of Tekamah on County Road P, in Section 5 of Riverside Township in Burt County, Nebraska.

DIRECTIONS

From Tekamah, travel north on Highway 75 North / North 13th Street for 8.6 miles. Turn right (east) on County Road P for 1.4 miles. The farm is situated on the north side of County Road P.

IMPROVEMENTS

Pivot Information:
 Make: Valley
 Model: 8000
 Year: 2013
 Number of Towers: 7
 GPM: 1,000
 Serial Number: 10986394



PRICE: \$651,750
PRICE PER ACRE: \$5,500

TILLABLE SOILS MAP

Code	Soil Description	Acres	Percent of Field	Non-Irr Class Legend	Non-Irr Class *c	Irr Class *c	*n NCCPI Overall
7791	Luton silty clay	95.29	80.8%	Green	IIIw	IIIw	50
7800	Owego silty clay	22.71	19.2%	Green	IIIw	IIIw	54

Weighted Average *n 50.8



ANDREW ZELLMER
 712.898.5913
 Andrewz@PeoplesCompany.com

BRYAN BERGDAL
 712.251.8588
 Bryan@PeoplesCompany.com



12119 Stratford Drive
Suite B
Clive, IA 50325



Follow Us!    

BURT COUNTY

299.25 ACRES M/L OF NEBRASKA FARMLAND AVAILABLE



ANDREW ZELLMER
712.898.5913
Andrewz@PeoplesCompany.com

BRYAN BERGDALE
712.251.8588
Bryan@PeoplesCompany.com