

ACREAGE FOR SALE

LISTING #14705

PRICE: \$495,000

DESCRIPTION: The Ultimate Acreage! This property offers just about everything you could ask for! Great location on paved county highway less than a mile from Lake Ahquabi State Park, just 5 miles south of Indianola. This clean walkout ranch home is a must see with beautiful views overlooking the 4 acre m/l stocked pond. The house includes 4 bedrooms, 3 and a 1/2 bath. The pond has a dock, an overlook deck, and nearby Gazebo is great for entertaining. The 40 X 60 Utility building is insulated and heated and includes living quarters and a bathroom, plenty of room for storing the toys. Visit our website for more details!

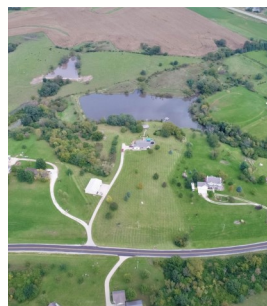
KENNY HERRING, ALC

C: 515-783-8718

O: 515.961-0247

Kenny@PeoplesCompany.com

19.03 ACRES M/L
12343 G-58 HWY, INDIANOLA, IOWA 50125



PeoplesCompany.com
855.800.LAND

12119 Stratford Dr, Ste B
Clive, Iowa 50325