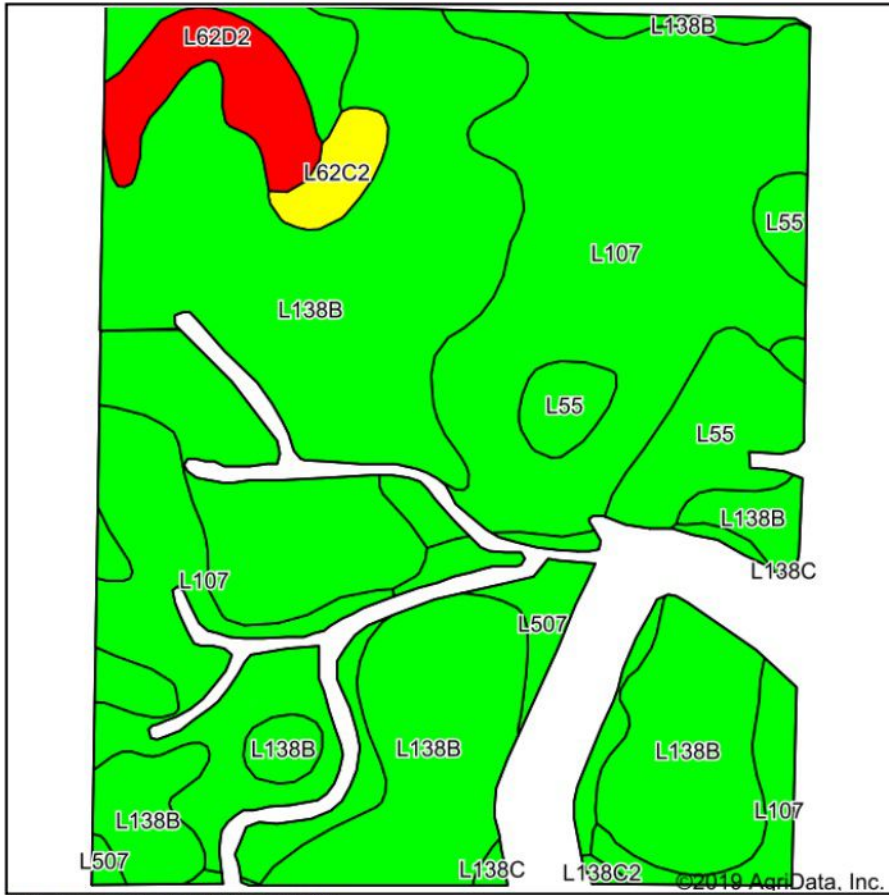
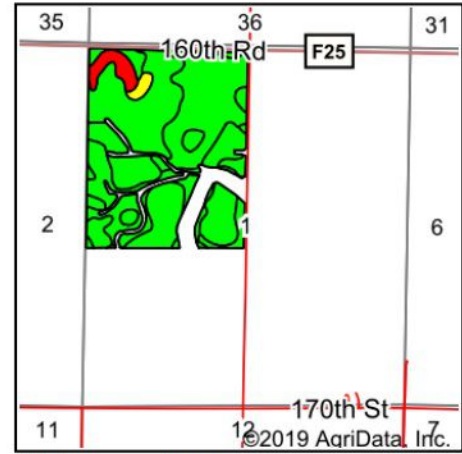


# Tillable Soils Map



Soils data provided by USDA and NRCS.



State: **Iowa**  
 County: **Guthrie**  
 Location: **1-80N-30W**  
 Township: **Cass**  
 Acres: **173**  
 Date: **2/5/2019**

**PEOPLES COMPANY**  
 INNOVATIVE. REAL ESTATE. SOLUTIONS.

Maps Provided By:  
  
 CUSTOMIZED ONLINE MAPPING  
 © AgriData, Inc. 2019 www.AgriDataInc.com



Area Symbol: IA077, Soil Area Version: 26

Code	Soil Description	Acres	Percent of field	CSR2 Legend	Non-Irr Class *c	CSR2**	*n NCCPI Overall
L138B	Clarion loam, Bemis moraine, 2 to 6 percent slopes	83.45	48.2%	Green	IIe	88	79
L107	Webster clay loam, Bemis moraine, 0 to 2 percent slopes	64.29	37.2%	Green	IIw	88	80
L55	Nicollet loam, 1 to 3 percent slopes	10.28	5.9%	Green	Ie	91	83
L62D2	Storden loam, Bemis moraine, 10 to 16 percent slopes, moderately eroded	6.43	3.7%	Red	IVe	41	60
L507	Canisteo clay loam, Bemis moraine, 0 to 2 percent slopes	5.59	3.2%	Green	IIw	87	79
L62C2	Storden loam, Bemis moraine, 6 to 10 percent slopes, moderately eroded	2.39	1.4%	Yellow	IIIe	64	63
L138C	Clarion loam, Bemis moraine, 6 to 10 percent slopes	0.33	0.2%	Green	IIIe	84	76
L138C2	Clarion loam, Bemis moraine, 6 to 10 percent slopes, moderately eroded	0.24	0.1%	Green	IIIe	83	60
<b>Weighted Average</b>						<b>86.1</b>	<b>*n 78.6</b>

\*\*IA has updated the CSR values for each county to CSR2.

\*n: The aggregation method is "Weighted Average using major components"

\*c: Using Capabilities Class Dominant Condition Aggregation Method

Soils data provided by USDA and NRCS.