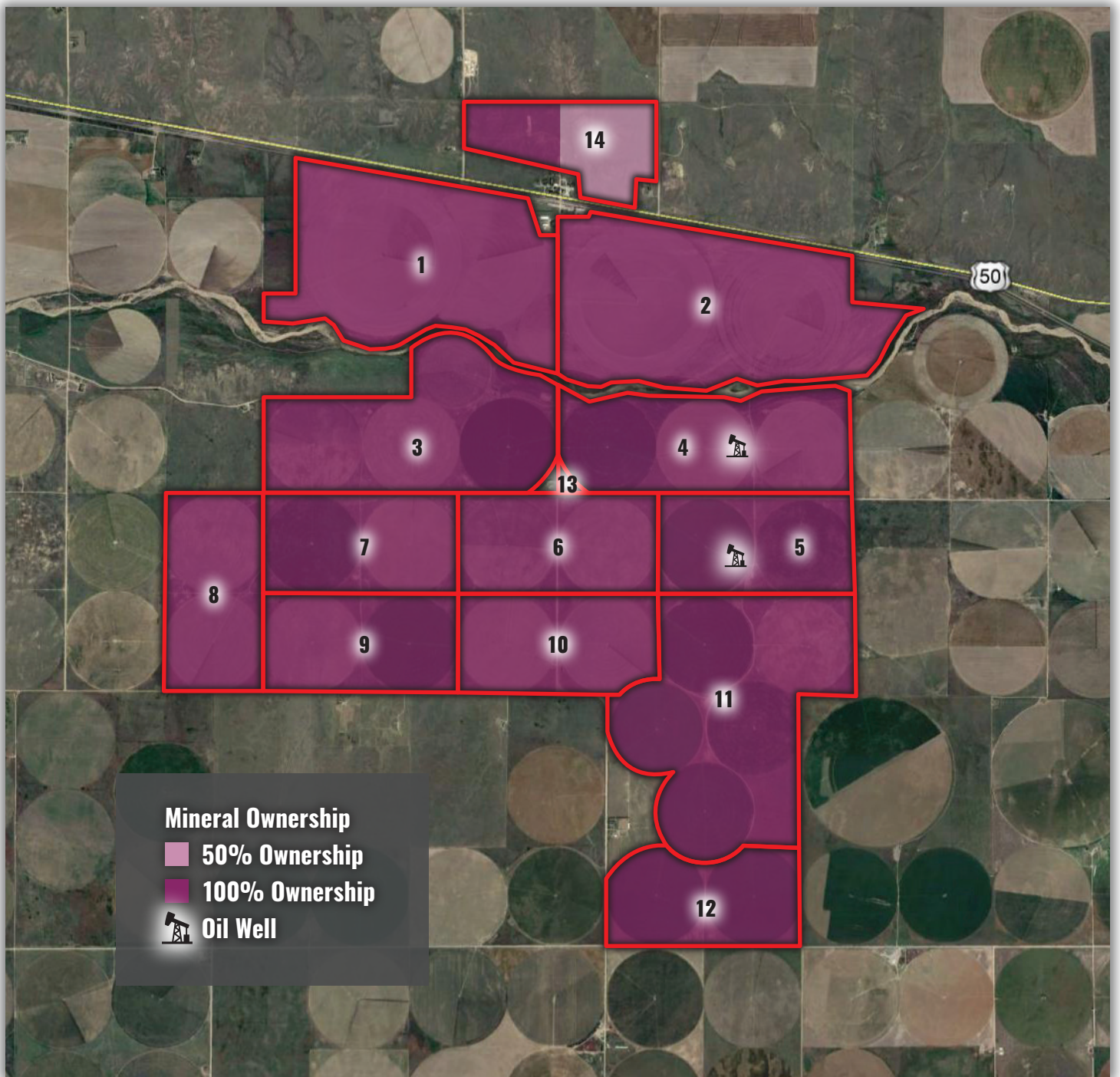


# MINERAL OWNERSHIP MAP



*\*Mineral ownership and lease information was provided by a third part service. Buyer should do their own investigation regarding mineral rights associated with each parcel. Seller will convey one hundred (100%) of whatever mineral rights may be owned by the Seller. See online Data Room for mineral rights deed, division order, and leases impacting property.*