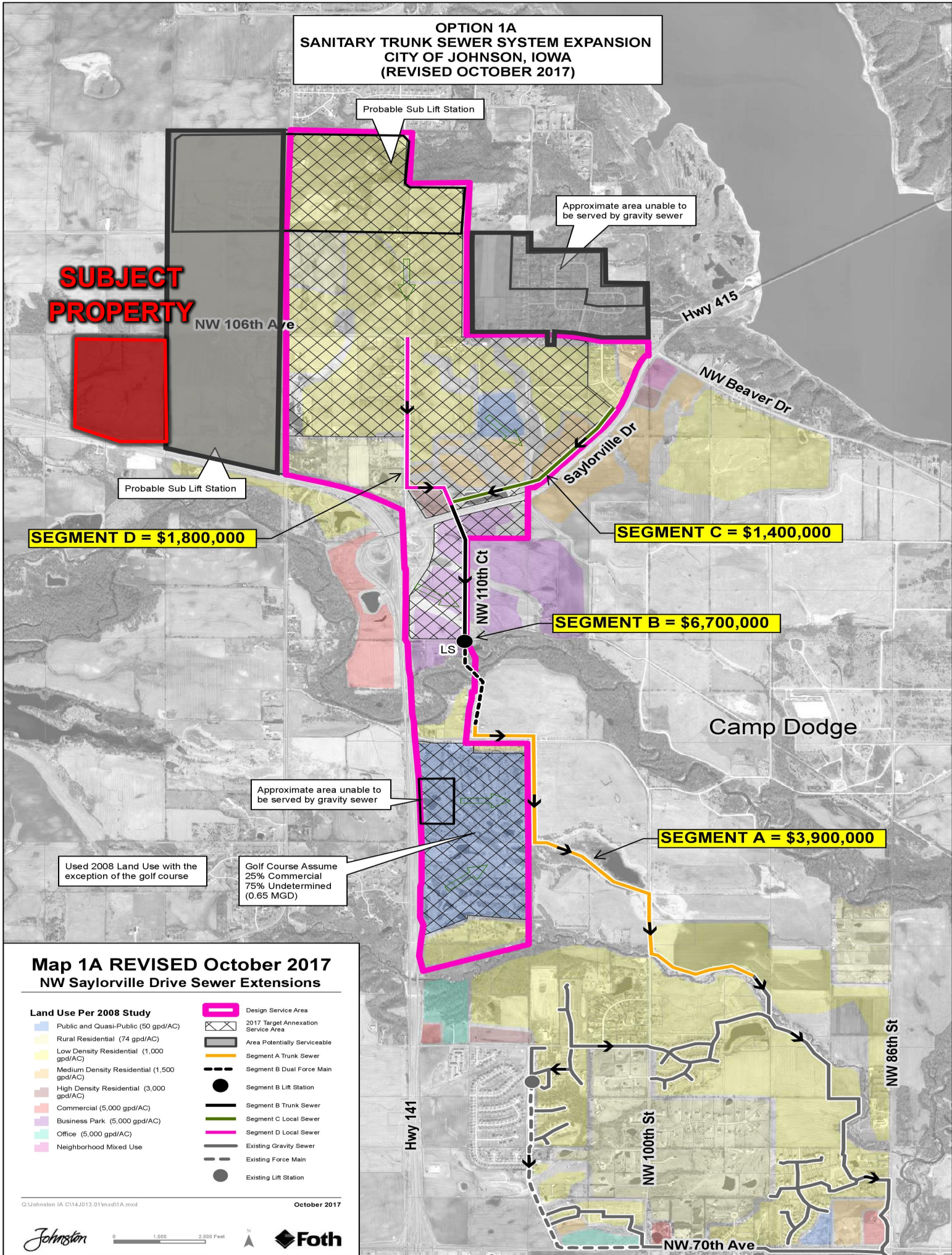


**OPTION 1A
SANITARY TRUNK SEWER SYSTEM EXPANSION
CITY OF JOHNSON, IOWA
(REVISED OCTOBER 2017)**



**Map 1A REVISED October 2017
NW Saylorville Drive Sewer Extensions**

Land Use Per 2008 Study

- Public and Quasi-Public (50 gpd/AC)
- Rural Residential (74 gpd/AC)
- Low Density Residential (1,000 gpd/AC)
- Medium Density Residential (1,500 gpd/AC)
- High Density Residential (3,000 gpd/AC)
- Commercial (5,000 gpd/AC)
- Business Park (5,000 gpd/AC)
- Office (5,000 gpd/AC)
- Neighborhood Mixed Use

- Design Service Area
- 2017 Target Annexation Service Area
- Area Potentially Serviceable
- Segment A Trunk Sewer
- Segment B Dual Force Main
- Segment B Lift Station
- Segment B Trunk Sewer
- Segment C Local Sewer
- Segment D Local Sewer
- Existing Gravity Sewer
- Existing Force Main
- Existing Lift Station