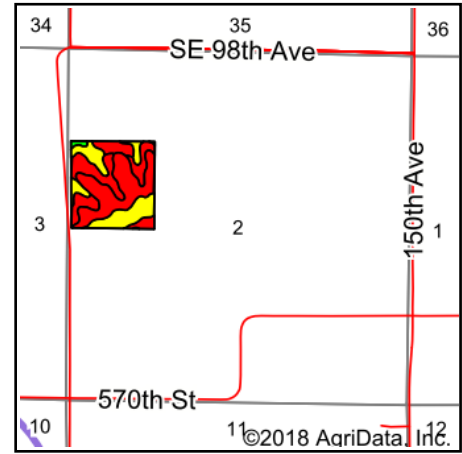
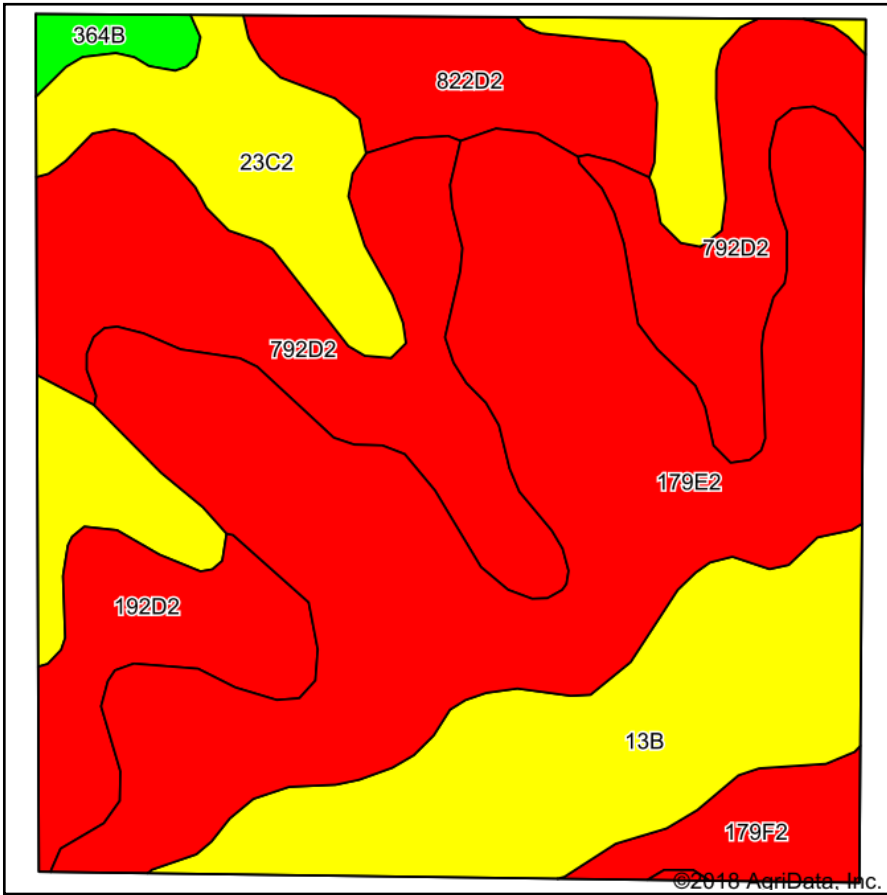


# Soils Map



State: **Iowa**  
 County: **Lucas**  
 Location: **2-73N-23W**  
 Township: **Otter Creek**  
 Acres: **40**  
 Date: **11/19/2018**



Area Symbol: IA117, Soil Area Version: 26

Code	Soil Description	Acres	Percent of field	CSR2 Legend	Non-Irr Class *c	*i Corn	*i Soybeans	CSR2**	CSR	*n NCCPI Overall	*n NCCPI Corn	*n NCCPI Small Grains
179E2	Gara clay loam, 14 to 18 percent slopes, moderately eroded	14.36	35.9%		Vle	139.2	40.4	23	33	55	55	38
792D2	Armstrong clay loam, 9 to 14 percent slopes, moderately eroded	7.93	19.8%		IVe	88	25.5	5	13	51	51	38
13B	Zook-Olmitz-Vesser complex, 0 to 5 percent slopes	5.97	14.9%		IIw	200	58	68	53	80	79	14
23C2	Arispe silty clay loam, 5 to 9 percent slopes, moderately eroded	5.15	12.9%		IIIe	80	23.2	62	50	82	82	49
192D2	Adair clay loam, heavy till, 9 to 14 percent slopes, moderately eroded	2.46	6.2%		IVe	108.8	31.6	9	15	58	58	31
822D2	Lamoni silty clay loam, 9 to 14 percent slopes, moderately eroded	2.40	6.0%		IVe	100.8	29.2	10	15	69	69	45
179F2	Gara clay loam, 18 to 25 percent slopes, moderately eroded	1.27	3.2%		IVe	115.2	33.4	11	13	46	46	26
364B	Grundy silty clay loam, 2 to 5 percent slopes	0.46	1.2%		Ile	80	23.2	72	75	78	78	44
<b>Weighted Average</b>						<b>124.9</b>	<b>36.2</b>	<b>29.7</b>	<b>31.9</b>	<b>*n 62.4</b>	<b>*n 62.3</b>	<b>*n 35.5</b>

\*\*IA has updated the CSR values for each county to CSR2.

\*i Yield data provided by the ISPAID Database version 8.1.1 developed by IA State University.

\*n: The aggregation method is "Weighted Average using major components"

\*c: Using Capabilities Class Dominant Condition Aggregation Method

Soils data provided by USDA and NRCS.