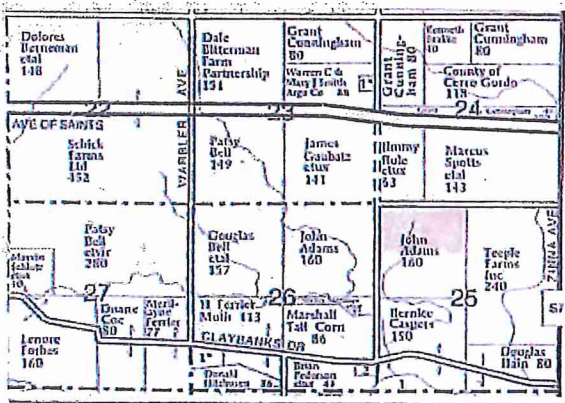
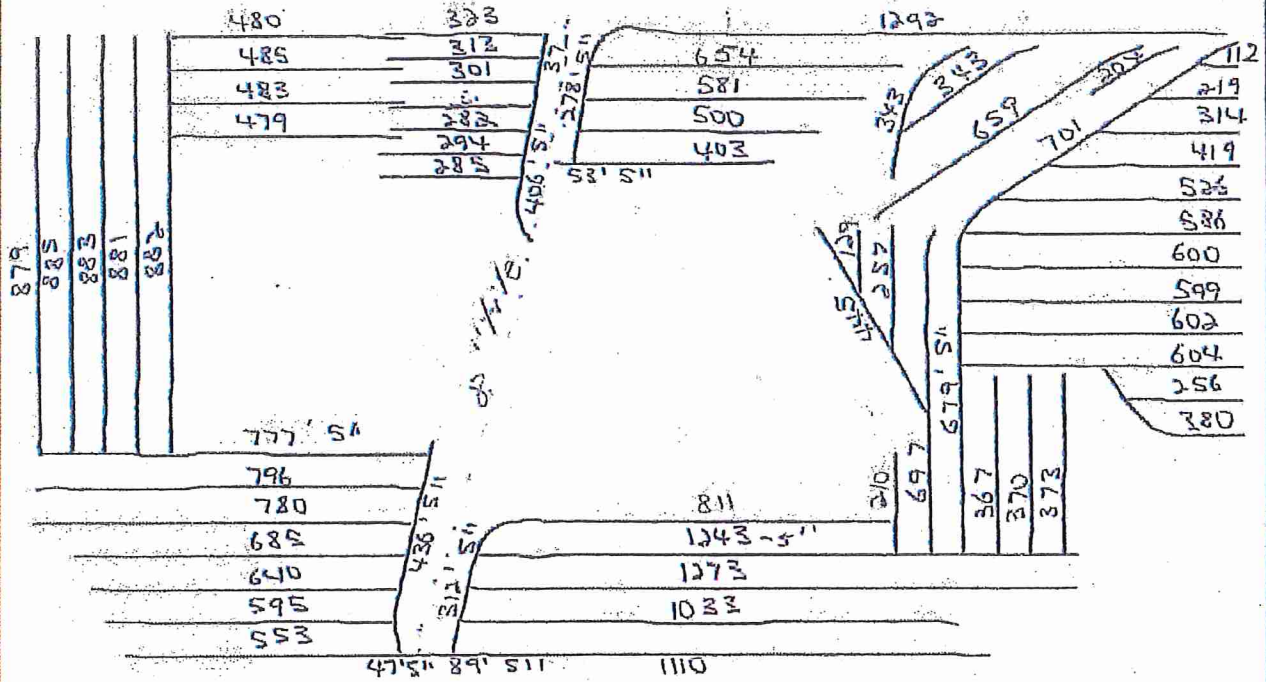


North

TILE MAP
John R. Adams Trust
Cerro Gordo County
N½ 25-96-19



| | | |
|---------------------------------|-------------|----------------|
| Customer: john adams trust | | |
| Location: s. w. of nora springs | | |
| Scale: 350 feet | Spacing: 70 | Date: 04 10 12 |
| POPP FARM DRAINAGE | | |

5" - 4320
4" - 30,488

8" fees. - 3

Tile Maps

