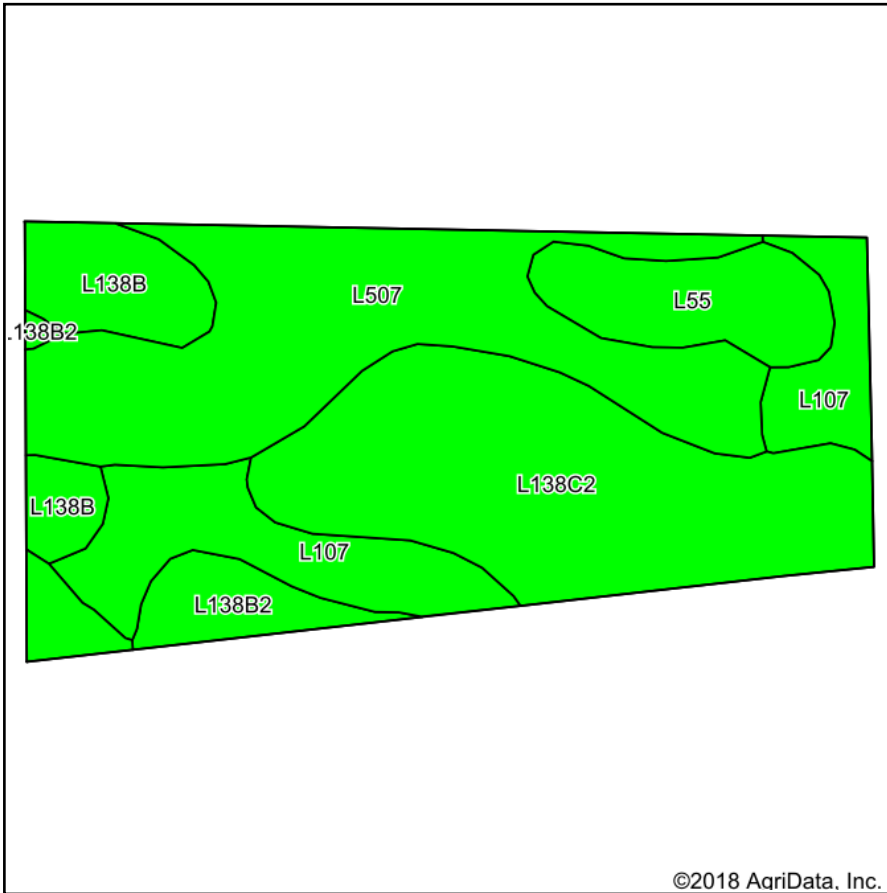
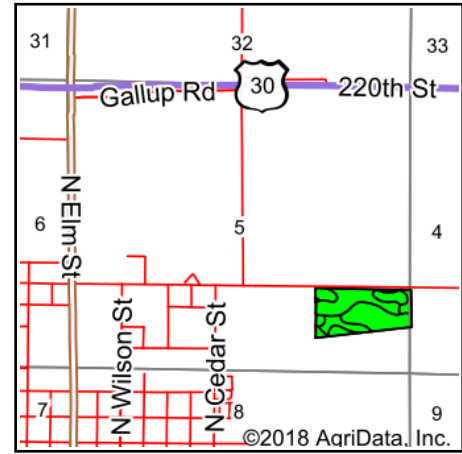


# Tillable Soils Map



Soils data provided by USDA and NRCS.



State: **Iowa**  
 County: **Greene**  
 Location: **5-83N-30W**  
 Township: **Jefferson**  
 Acres: **23**  
 Date: **7/20/2018**



Maps Provided By:



© Agridata, Inc. 2018

www.AgridataInc.com

Area Symbol: IA073, Soil Area Version: 23

Code	Soil Description	Acres	Percent of field	CSR2 Legend	Non-Irr Class *c	CSR2**	NCCPI Overall
L507	Canisteo clay loam, Bemis moraine, 0 to 2 percent slopes	7.54	32.8%		Ilw	87	78
L138C2	Clarion loam, Bemis moraine, 6 to 10 percent slopes, moderately eroded	7.15	31.1%		Ille	83	59
L107	Webster clay loam, Bemis moraine, 0 to 2 percent slopes	3.56	15.5%		Ilw	88	80
L55	Nicollet loam, 1 to 3 percent slopes	1.88	8.2%		Ie	91	83
L138B	Clarion loam, Bemis moraine, 2 to 6 percent slopes	1.82	7.9%		Ile	88	79
L138B2	Clarion loam, Bemis moraine, 2 to 6 percent slopes, moderately eroded	1.05	4.6%		Ile	85	63
<b>Weighted Average</b>						<b>86.2</b>	<b>72.2</b>

\*\*IA has updated the CSR values for each county to CSR2.

\*c: Using Capabilities Class Dominant Condition Aggregation Method

Soils data provided by USDA and NRCS.