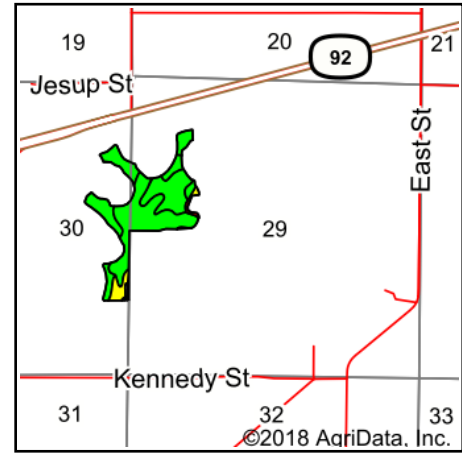
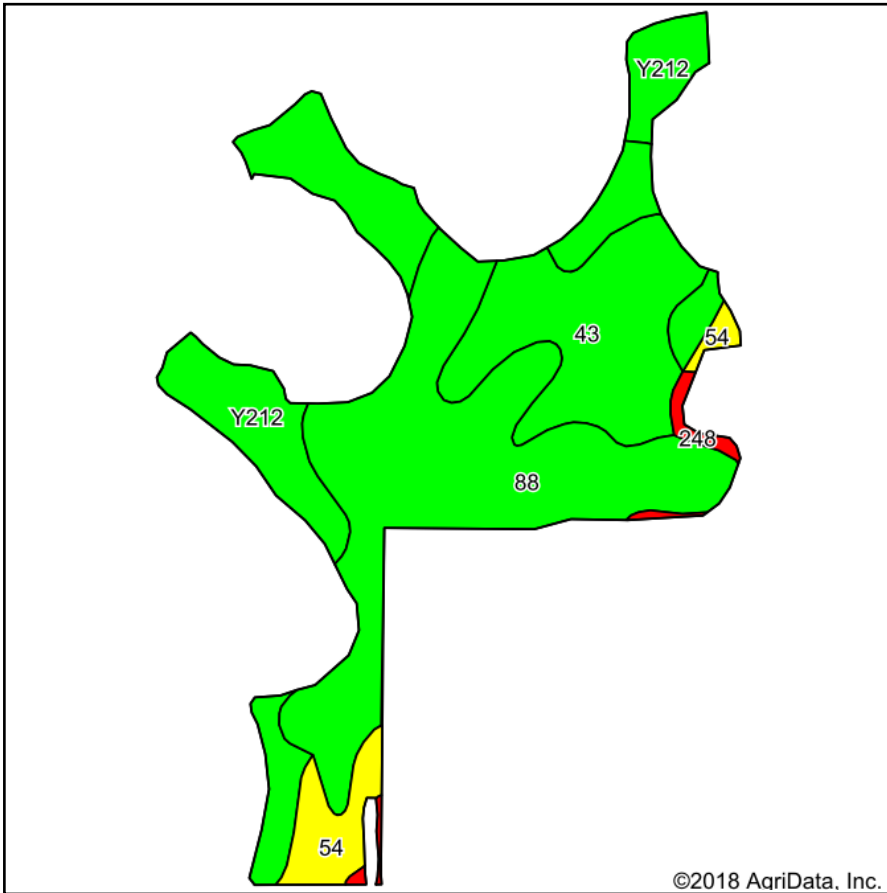


Soils Map








State: **Iowa**
 County: **Warren**
 Location: **30-76N-25W**
 Township: **Jefferson**
 Acres: **48.88**
 Date: **3/1/2018**

Maps Provided By:

 CUSTOMIZED ONLINE MAPPING
 © AgriData, Inc. 2018 www.AgridataInc.com



Area Symbol: IA181, Soil Area Version: 22

Code	Soil Description	Acres	Percent of field	CSR2 Legend	Non-Irr Class *c	CSR2**	CSR
88	Nevin silty clay loam, 0 to 2 percent slopes	22.81	46.7%		Iw	93	90
Y212	Kennebec silt loam, 0 to 2 percent slopes, occasionally flooded	12.21	25.0%		Iw	91	
43	Bremer silty clay loam, 0 to 2 percent slopes	10.26	21.0%		IIw	74	82
54	Zook silty clay loam, 0 to 2 percent slopes, occasionally flooded	2.84	5.8%		IIw	67	70
248	Wabash silty clay loam, 0 to 2 percent slopes	0.76	1.6%		IIIw	38	60
Weighted Average						86.1	*-

**IA has updated the CSR values for each county to CSR2.

*- CSR weighted average cannot be calculated on the current soils data, use prior data version for csr values.

*c: Using Capabilities Class Dominant Condition Aggregation Method

Soils data provided by USDA and NRCS.