

100.56 ACRES M/L OF WELL-MAINTAINED WARREN COUNTY PASTURE

Listing Number: 13506

Listing Price: \$129,500

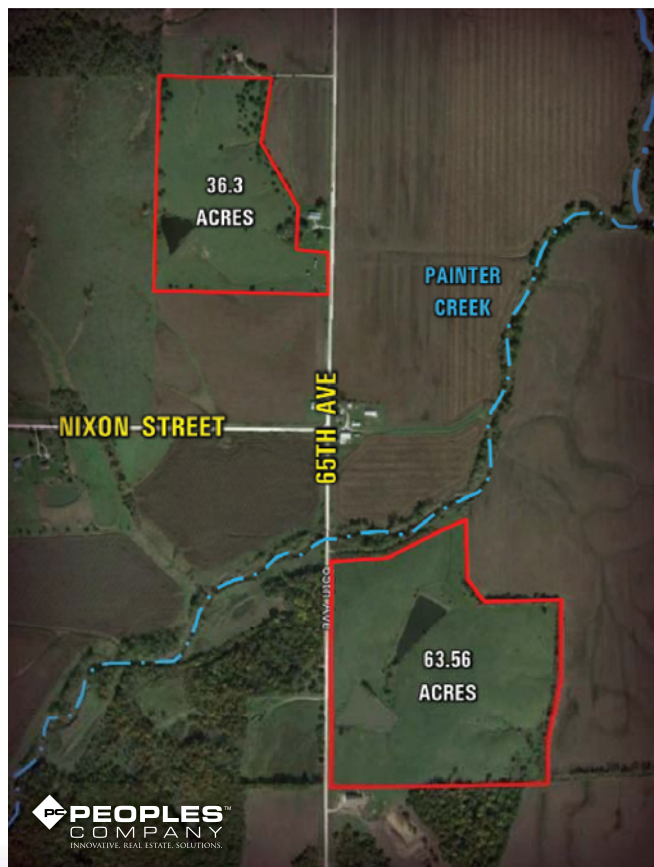
Taxes: \$386 Annually

Tract 1 (North Farm):

37 acres m/l of pasture with a stocked pond and good fences. Rolling topography provides several potential building sites with great views. Situated on the west side of 65th Avenue and north of Nixon Street approximately ¼ mile.

Directions:

From St. Marys, travel south on Hwy R45. Turn east onto Nixon Street and continue roughly 2.5 miles to 65th Avenue. Turn north on 65th Avenue. Land is located on the west side of 65th Avenue. Look for the Peoples Company sign.



Listing Number: 13507

Listing Price: \$222,460

Taxes: \$396 Annually

Tract 2 (South Farm):

63.56 acres m/l of pasture with two stocked ponds and good fences. New fence installed around both ponds Summer 2015. Several potential building sites with great views overlooking the South River valley. Situated on the east side of 65th Avenue and south of Nixon Street approximately ¼ mile.

Directions:

From St. Marys, travel south on Hwy R45. Turn east onto Nixon Street and continue roughly 2.5 miles to 65th Avenue. Turn south on 65th Avenue. Land situated on the east side of 65th Avenue. Look for the Peoples Company sign.

Agents:

Daran Becker: 515.979.3498, Daran@PeoplesCompany.com

Steve Bruere: 515.240.7500, Steve@PeoplesCompany.com

